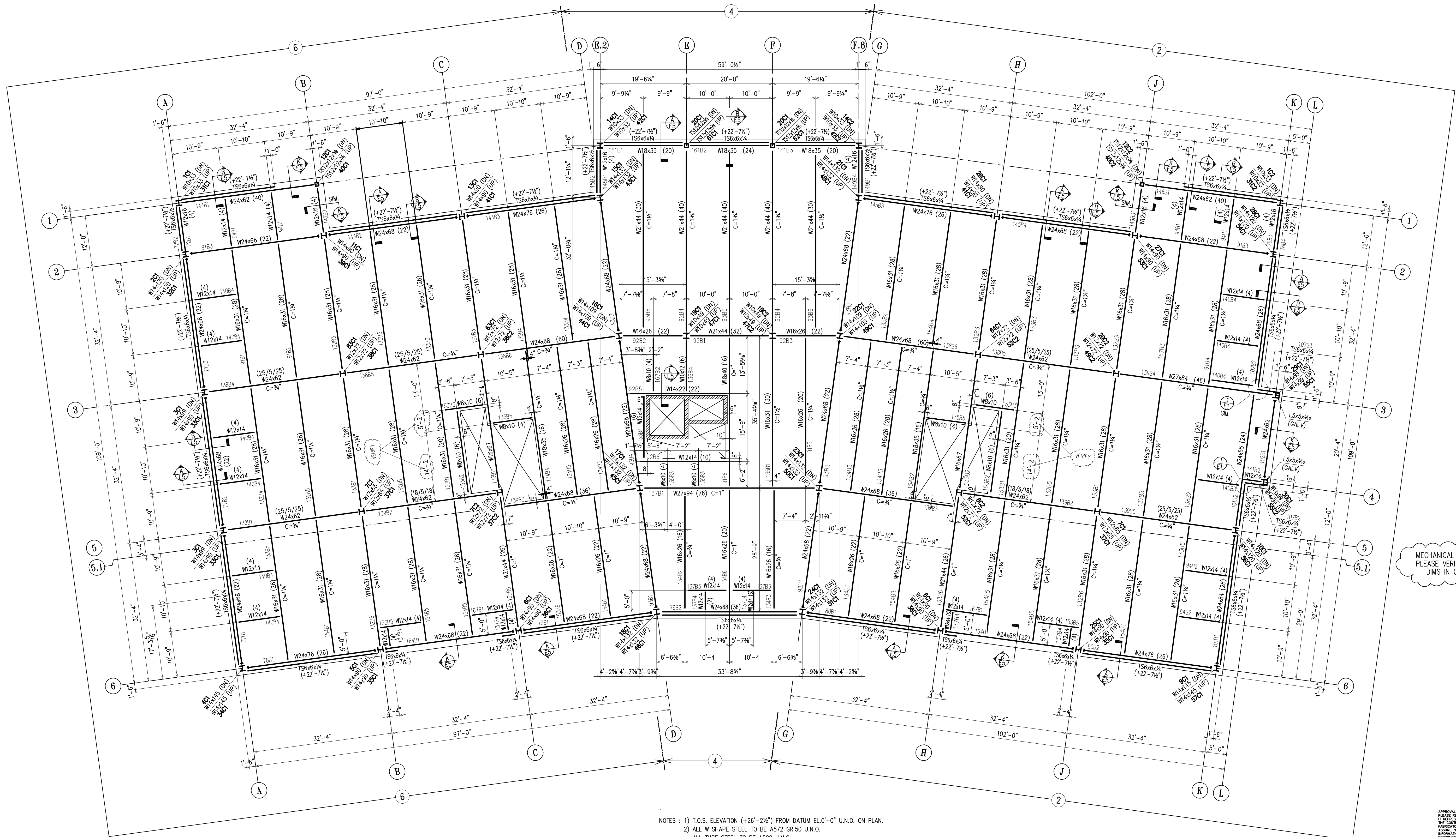


ERECTOR'S

N



PLEASE VERIFY



MECHANICAL CONTRACTOR, PLEASE VERIFY SUPPLY DIMS IN CLOUDS

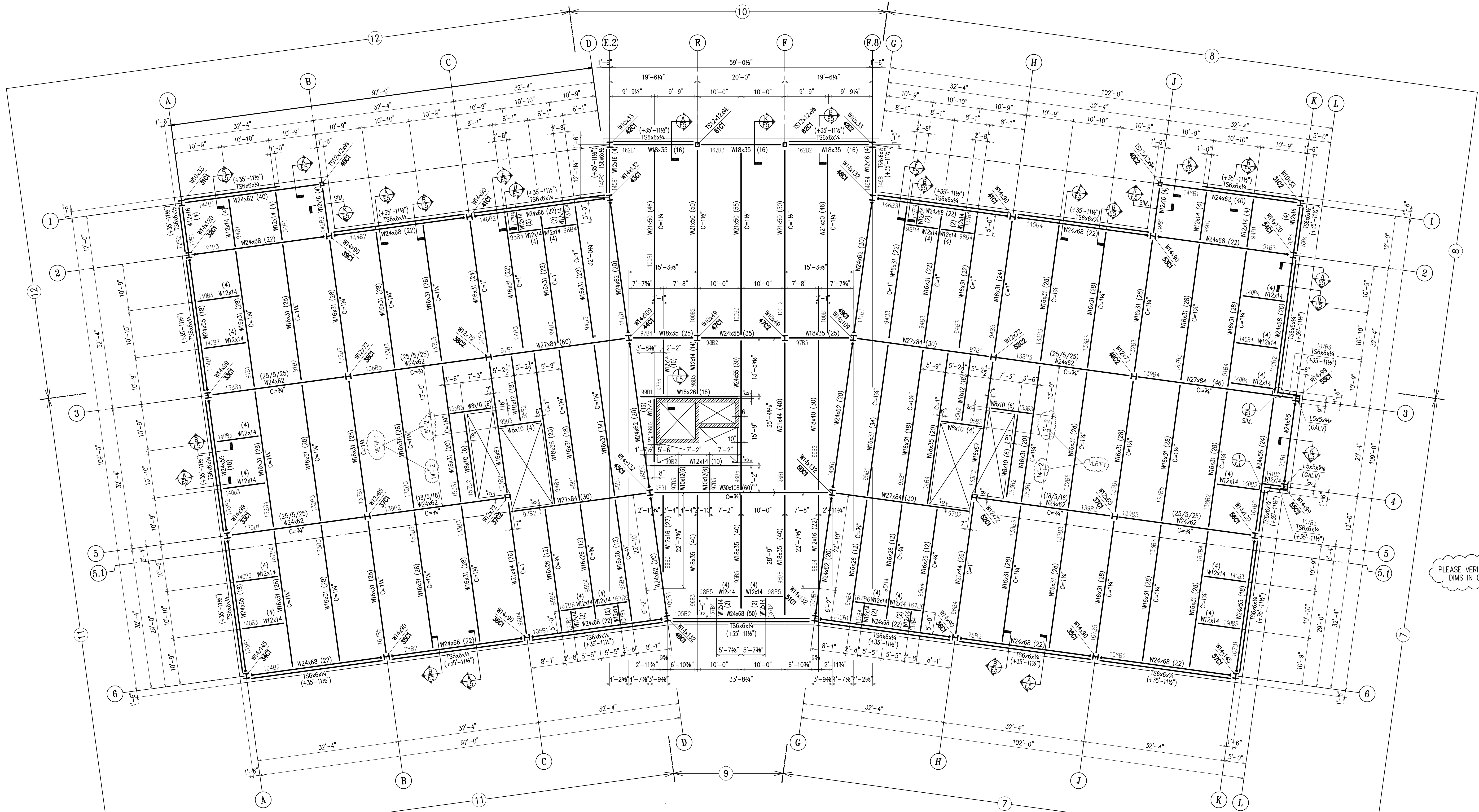
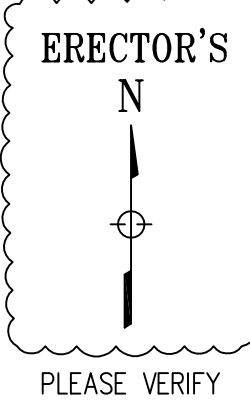
- NOTES: 1) I.O.S. ELEVATION (+26'-2 1/4") FROM DATUM EL.0'-0" U.N.O. ON PLAN.
 2) ALL W SHAPE STEEL TO BE A572 GR.50 U.N.O.
 ALL TUBE STEEL TO BE A500 U.N.O.
 ALL PIPE STEEL TO BE A53 U.N.O.
 3) ALL BOLTS TO BE 3/4" Ø A325-SC U.N.O.
 4) M DENOTES MOMENT CONNECTION.
 5) (S) INDICATES SLOPING MEMBER.

APPROVAL/REVIEW AUTHORITY: PLEASE REVIEW THIS DRAWING CAREFULLY. IT REPRESENTS OUR INTERPRETATION OF THE INTENT OF THE CONTRACT DOCUMENTS. HOWEVER, THE STEEL FABRICATOR AND THE STRUCTURAL STEEL OR IRON ASSUMING NO RESPONSIBILITY FOR THE ACCURACY OF THE INFORMATION SHOWN ON THIS DRAWING. THIS IS THE RESPONSIBILITY OF THE OWNER.
 IT WILL BE ASSUMED THAT ALL INFORMATION SHOWN HEREIN HAS THE APPROVATION OF THE APPROVAL AUTHORITY UNLESS NOTED TO THE CONTRARY ON THIS DRAWING WHEN IT IS RETURNED FROM APPROVAL.
 SUBSEQUENT CHANGES TO INFORMATION SHOWN IN THESE DRAWINGS AFTER FIRST SUBMISSION WILL BE CONSIDERED AS CONTRACT CHANGES.
 ISSUED BY THE NATIONAL INSTITUTE OF STEEL BUILDING 1977.

DRAWINGS PREPARED BY:
 DIVISION FIVE DETAILING INC.
 1770 GALLAGHER DR.
 VINELAND, NEW JERSEY 08360
 Phone: (856) 794-9474
 Fax: (856) 696-2027

PAINT	ONE SHOP COAT U/NOTED	4/78	PER APPROVAL	
MATERIAL	A36 U/NOTED	4/78	ADD MARKINGS	
HOLES	13/16" U/NOTED	3/78	PER ENG.	
ELECTRODES	E70XX	3/78	PER CHECK	7/24 FOR FIELD USE
TOTAL WEIGHT		NO DATE	DESCRIPTION	NO DATE DESCRIPTION
DIAG. REF #				REVISIONS

WEIR WELDING CO. INC.
 COURT HOUSE SQUARE
 SOMERVILLE BOROUGH, NEW JERSEY
 CONTRACT NO. S-609
 DATE 1/31/01
 CHECKED GS
 DATE 3/1/01
 DWG NO. E2



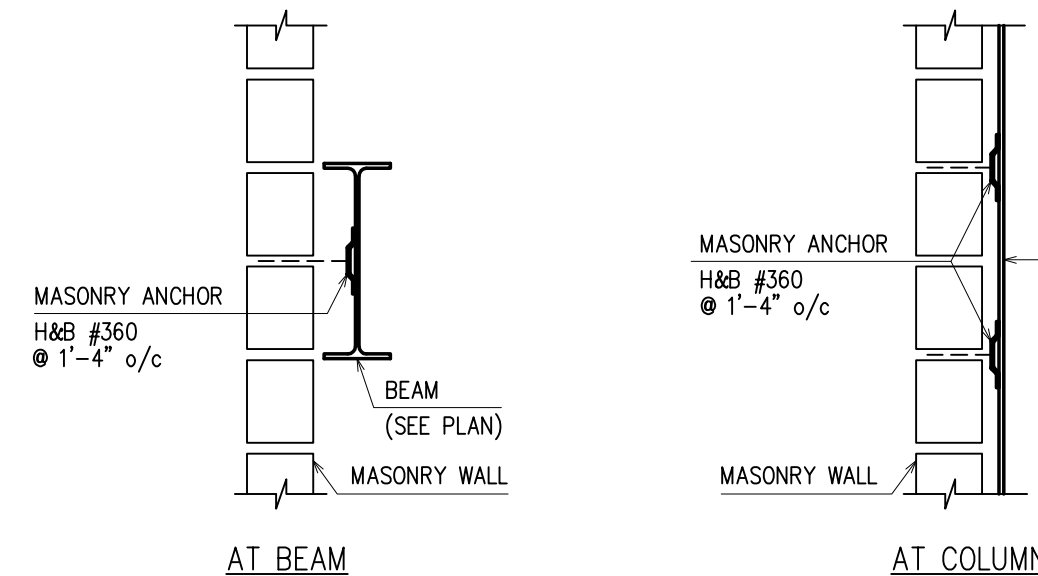
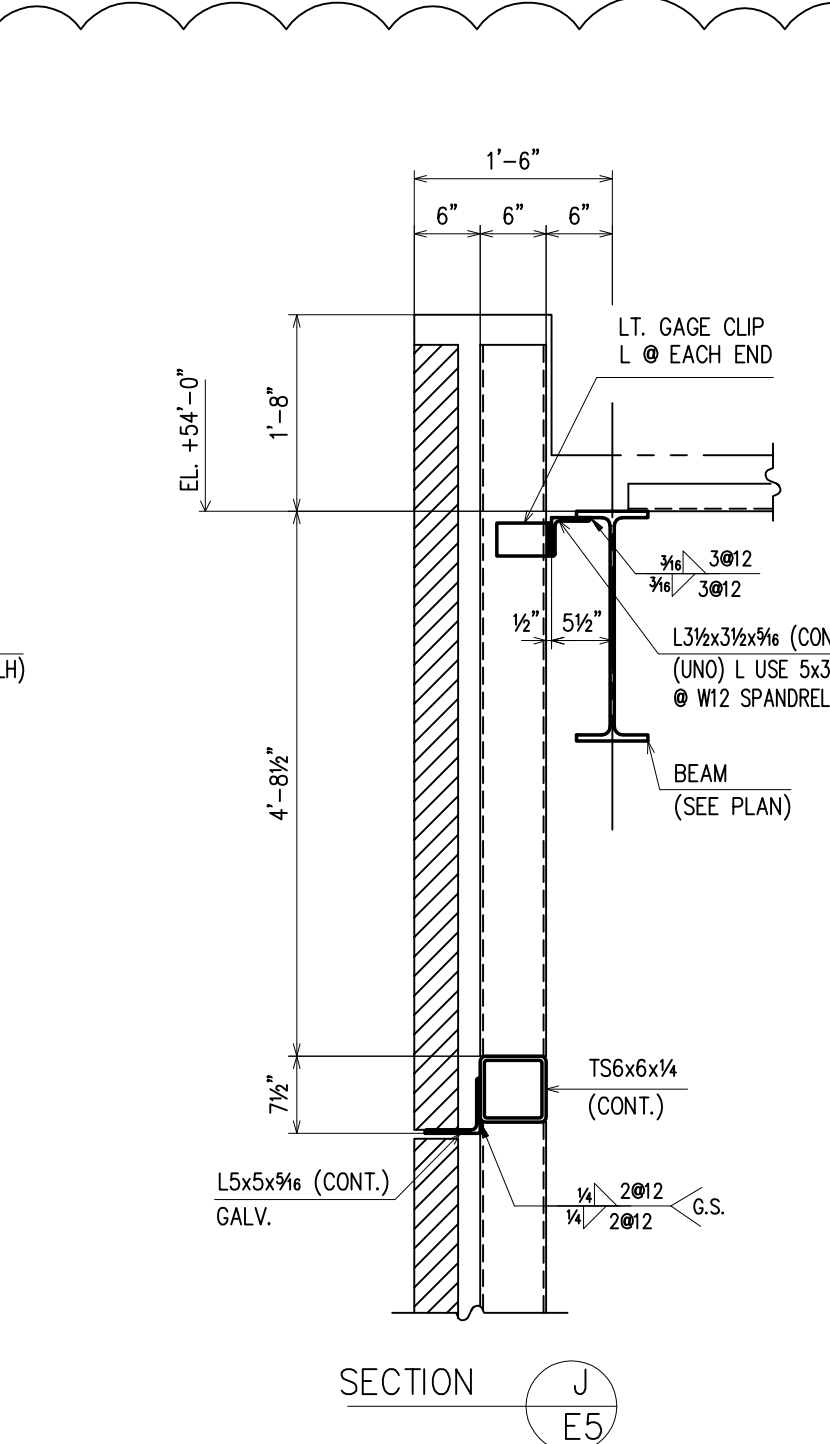
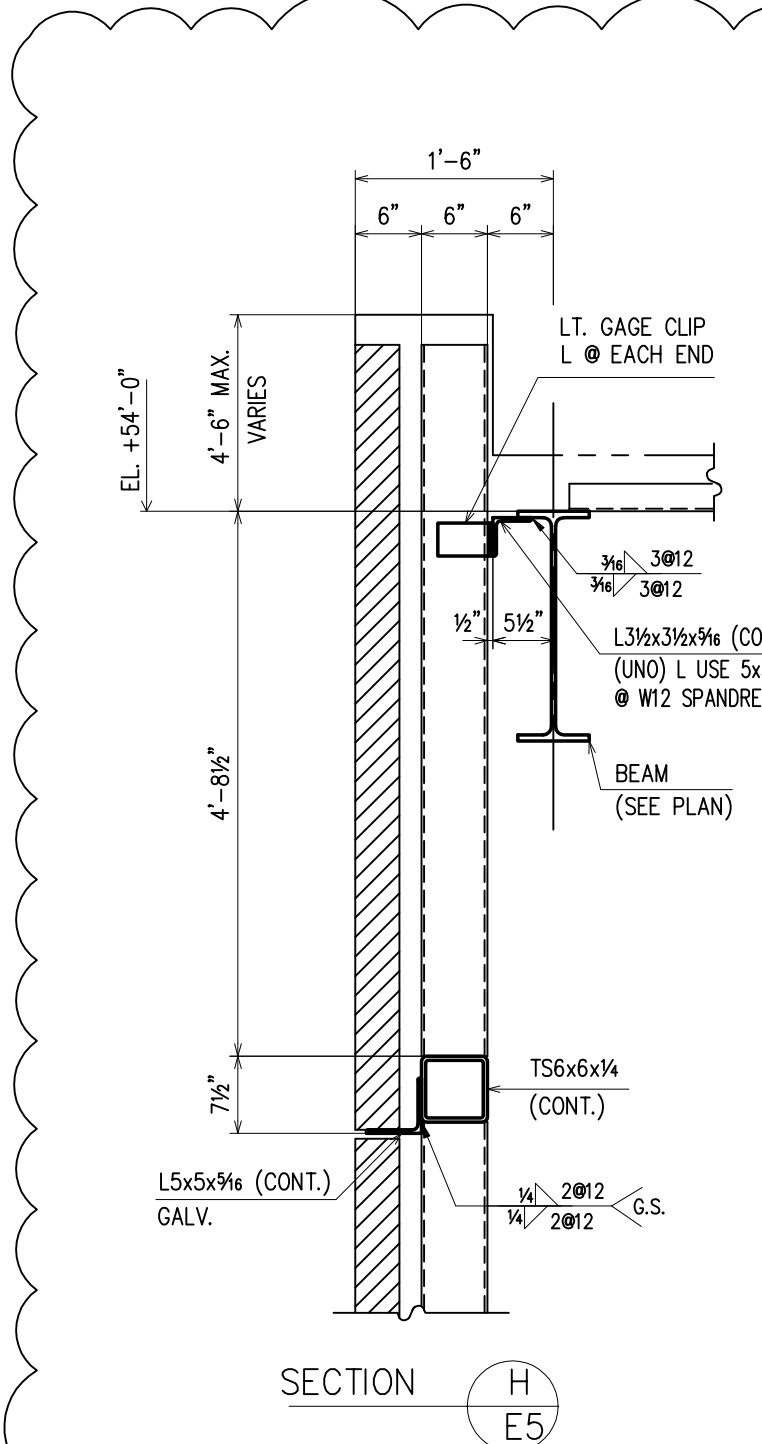
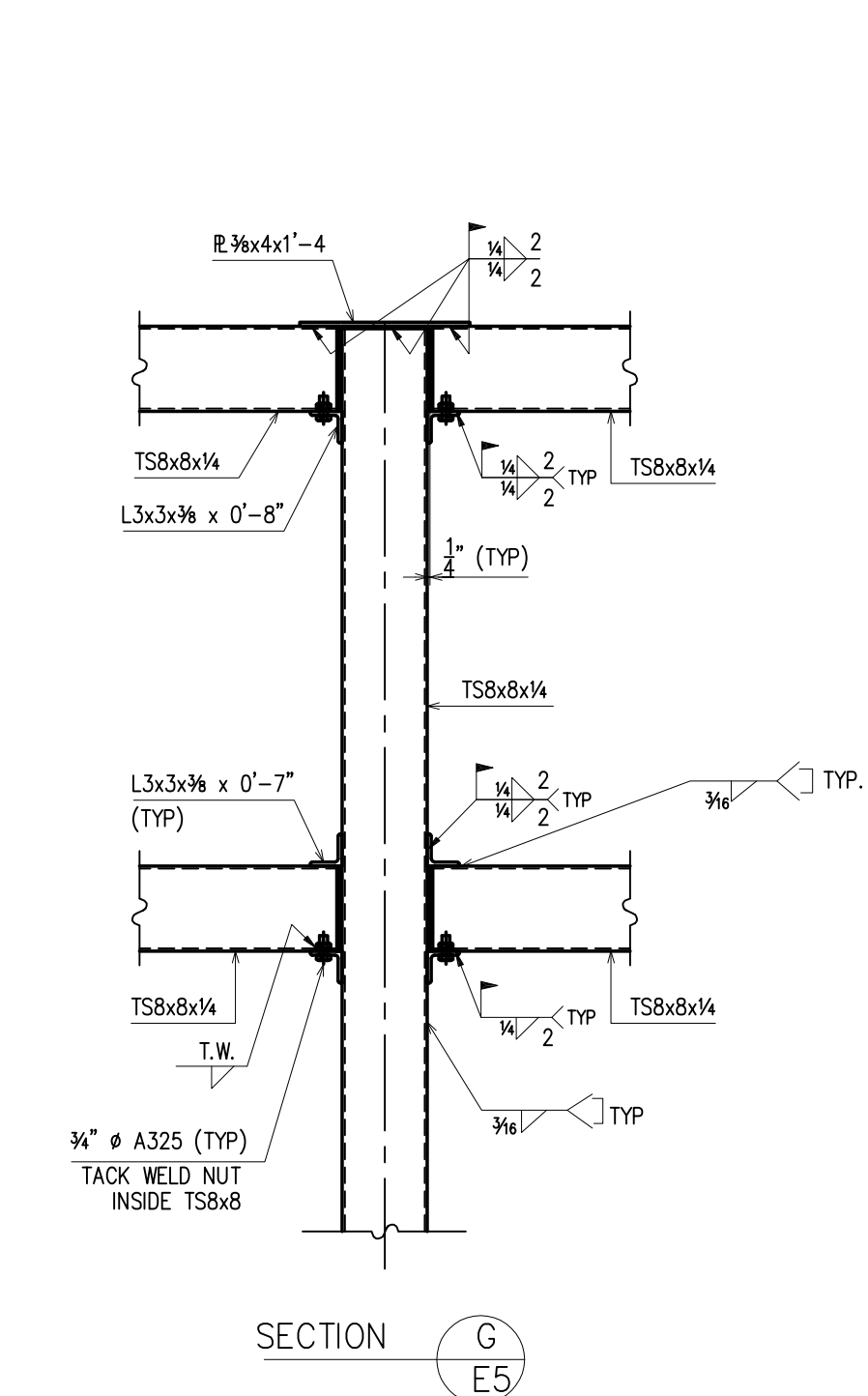
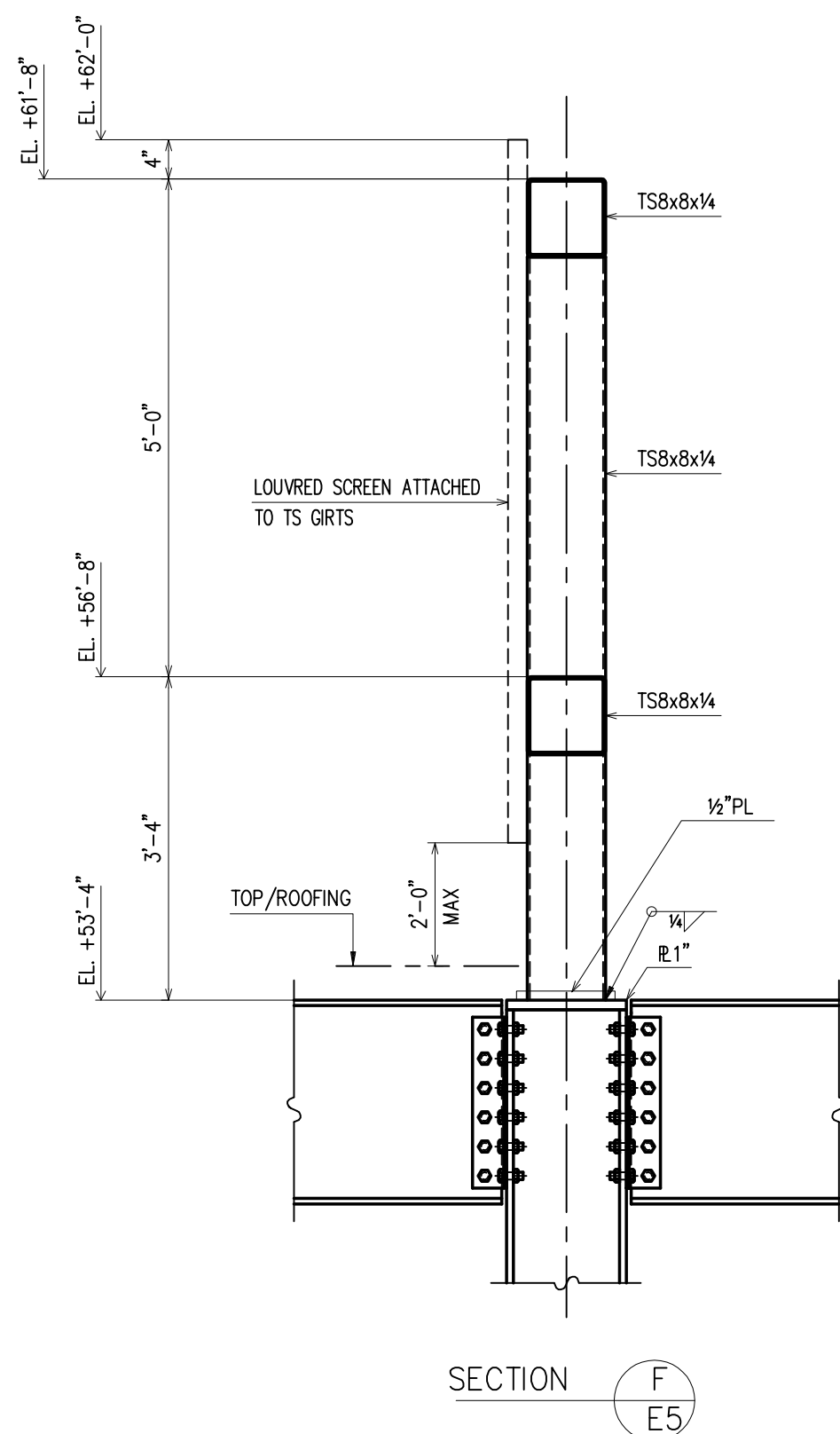
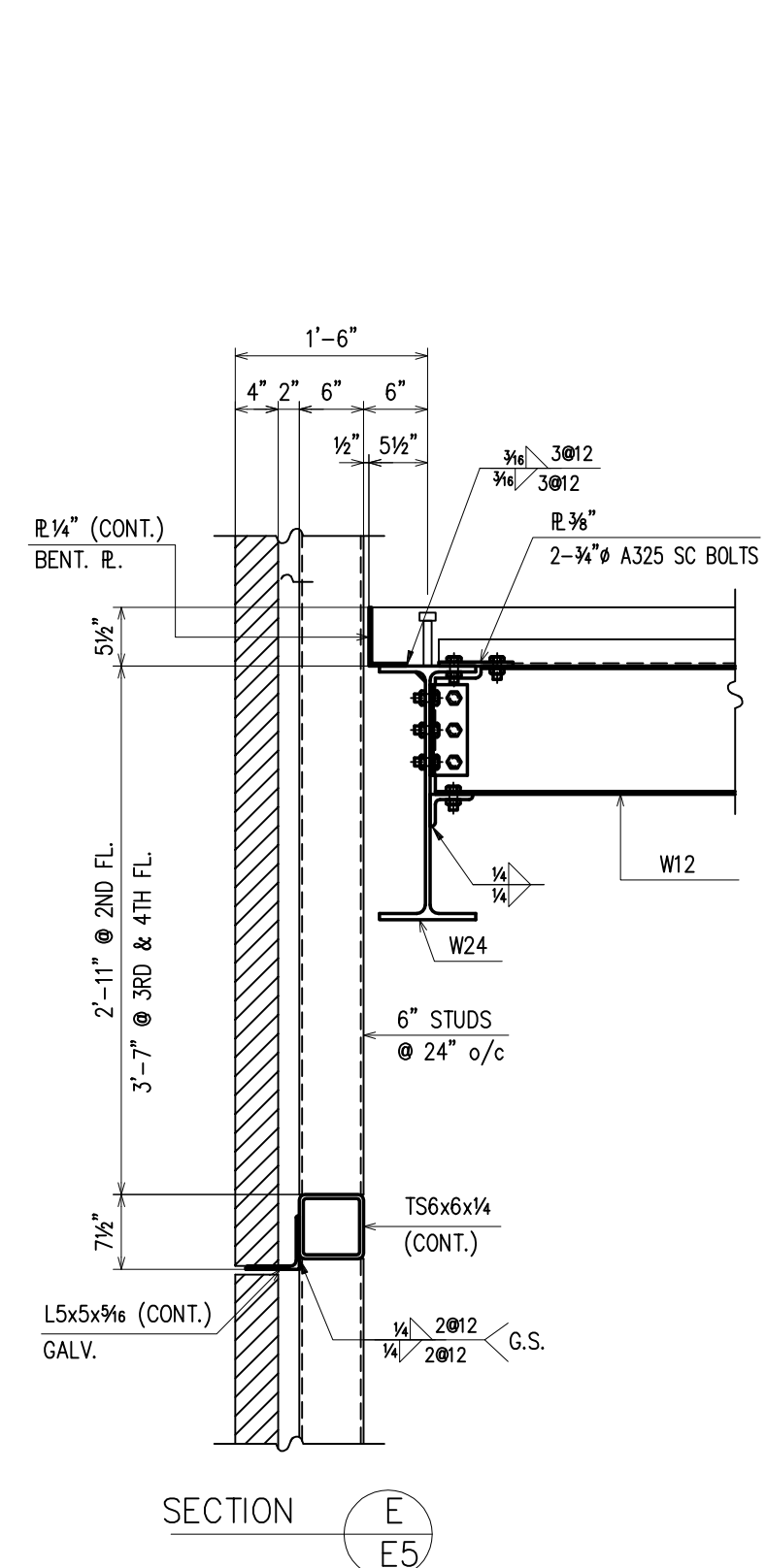
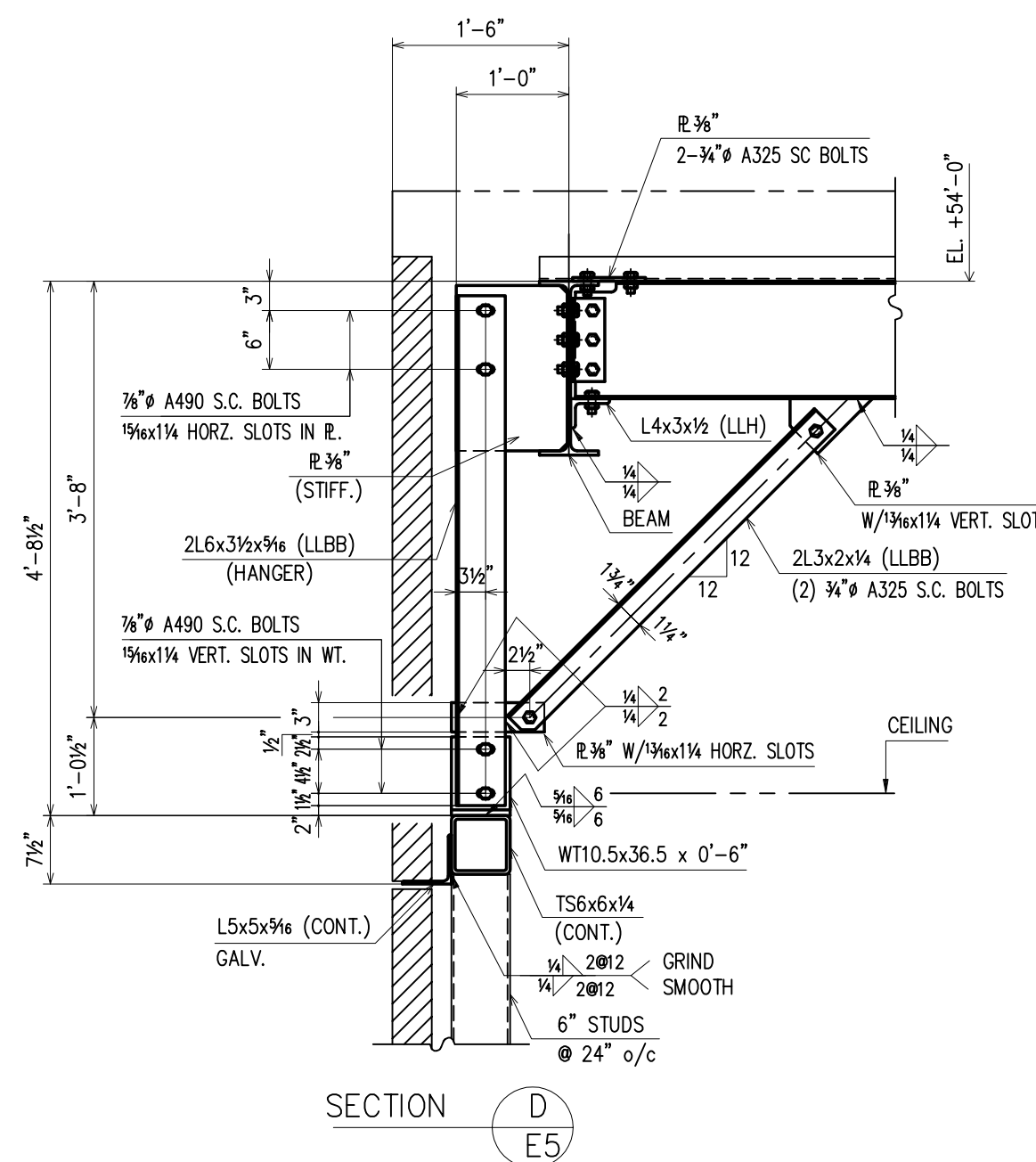
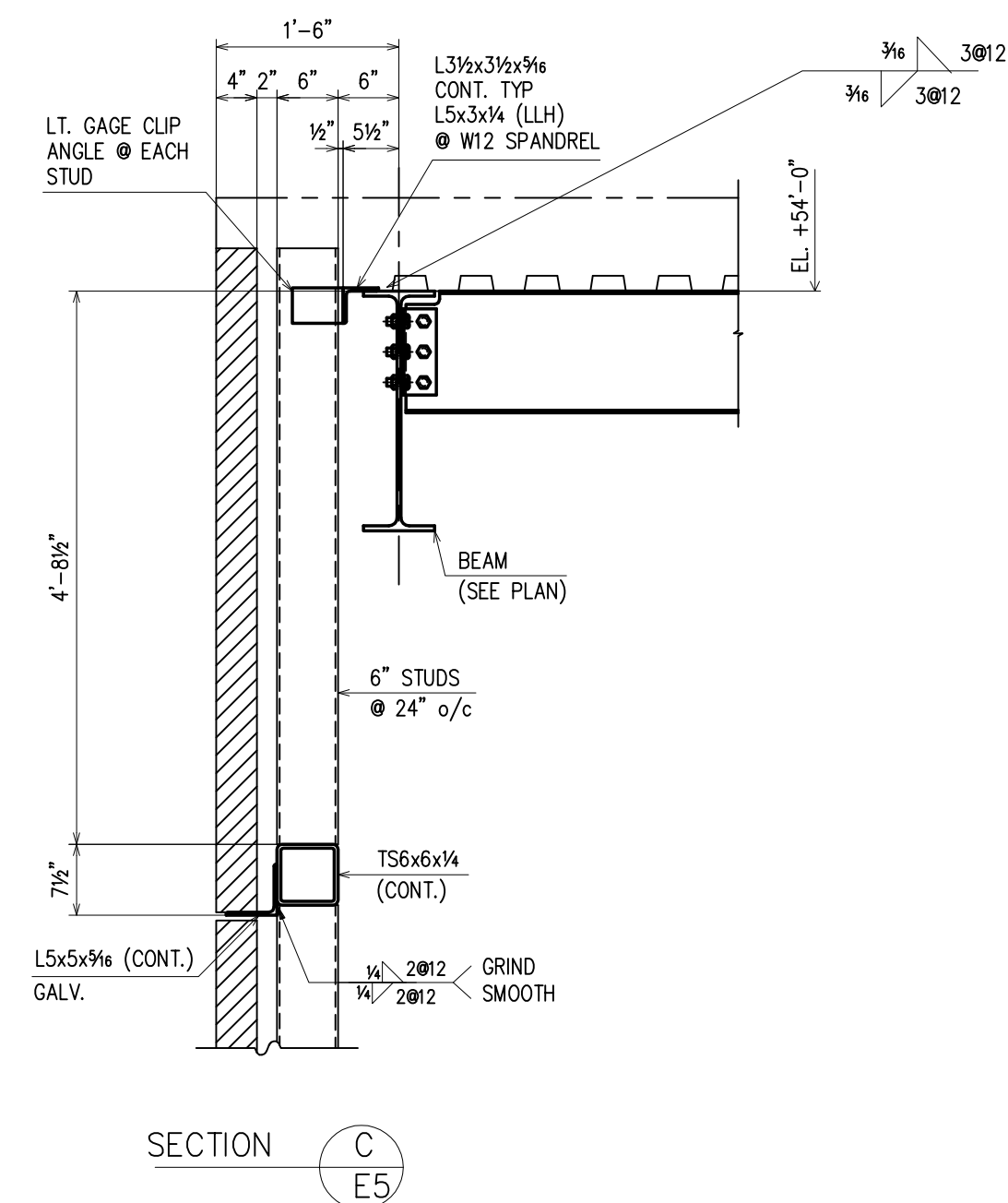
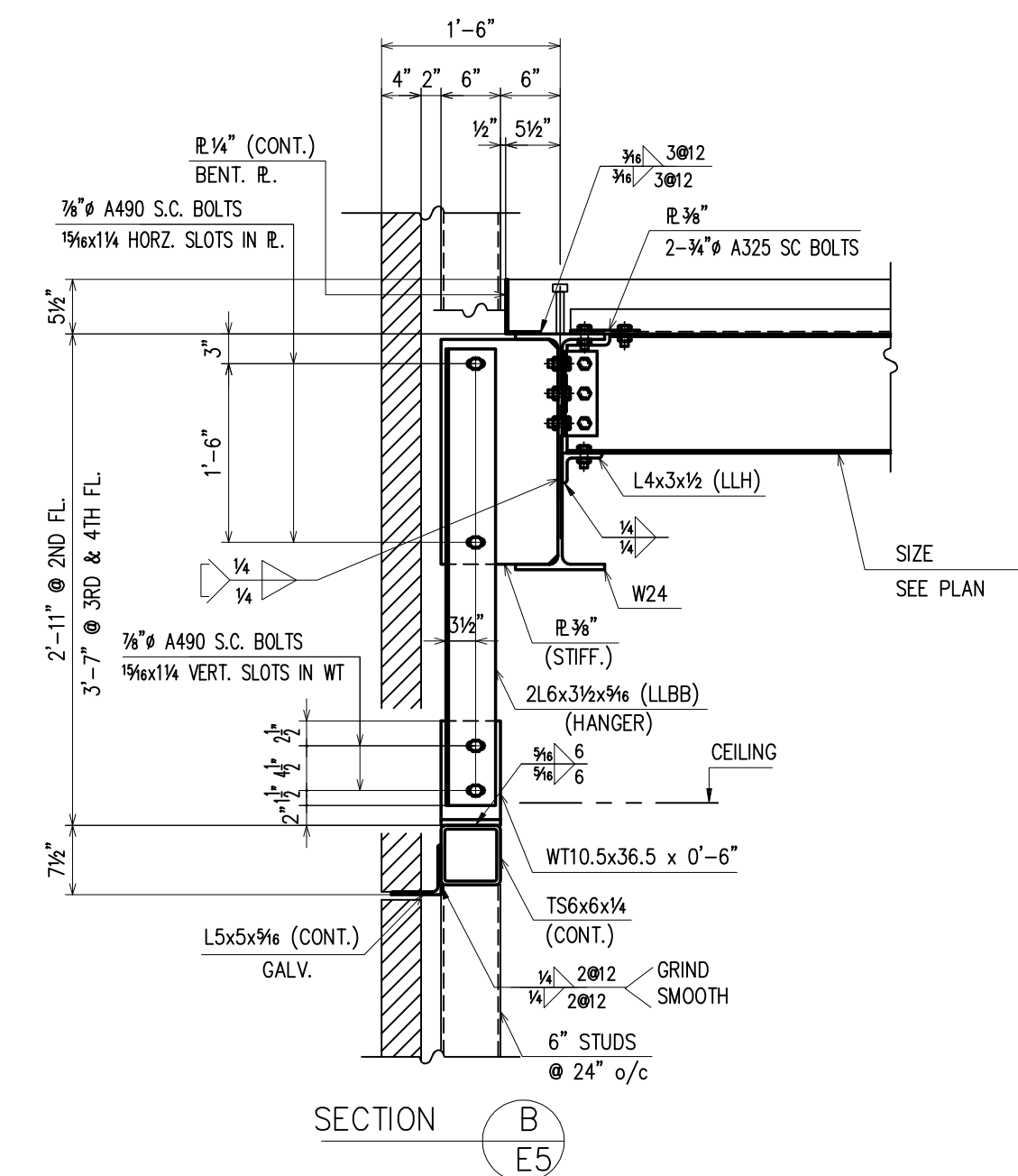
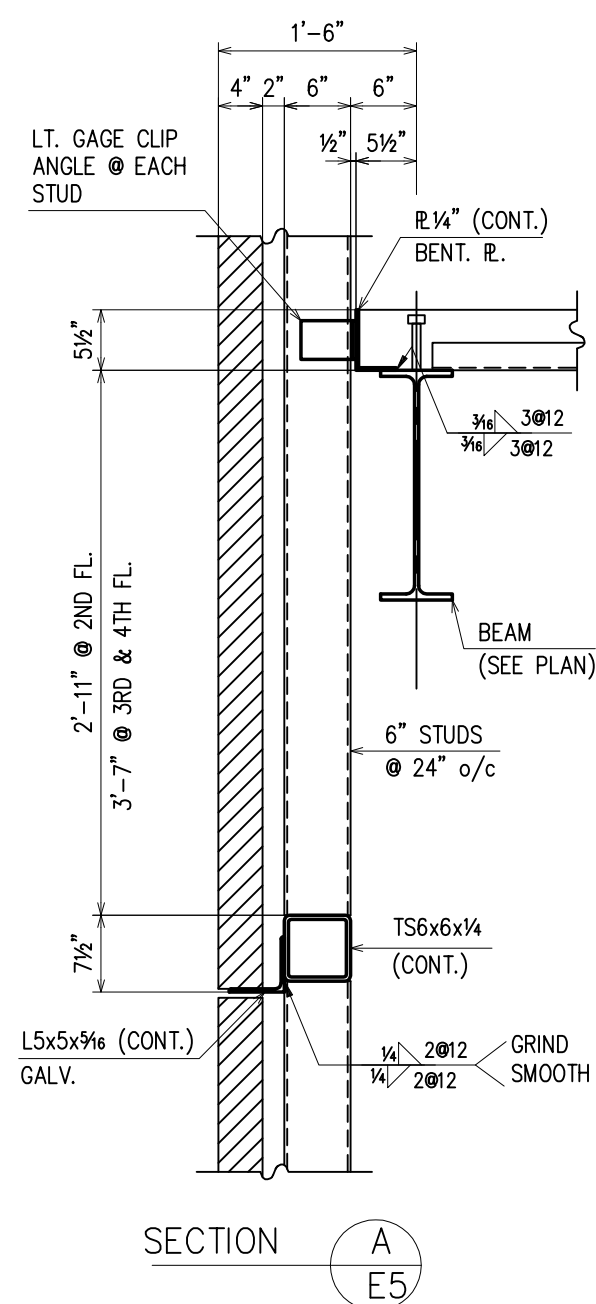
- NOTES : 1) T.O.S. ELEVATION (+39'-6 1/2") FROM DATUM EL. 0'-0" U.N.O. ON PLAN.
 2) ALL W SHAPE STEEL TO BE A572 GR.50 U.N.O.
 ALL TUBE STEEL TO BE A500 U.N.O.
 ALL PIPE STEEL TO BE A53 U.N.O.
 3) ALL BOLTS TO BE 3/4" # A325-SC U.N.O.
 4) DENOTES MOMENT CONNECTION.
 5) (S) INDICATES SLOPING MEMBER.

PLEASE VERIFY/SUPPLY DIMS IN CLOUDS

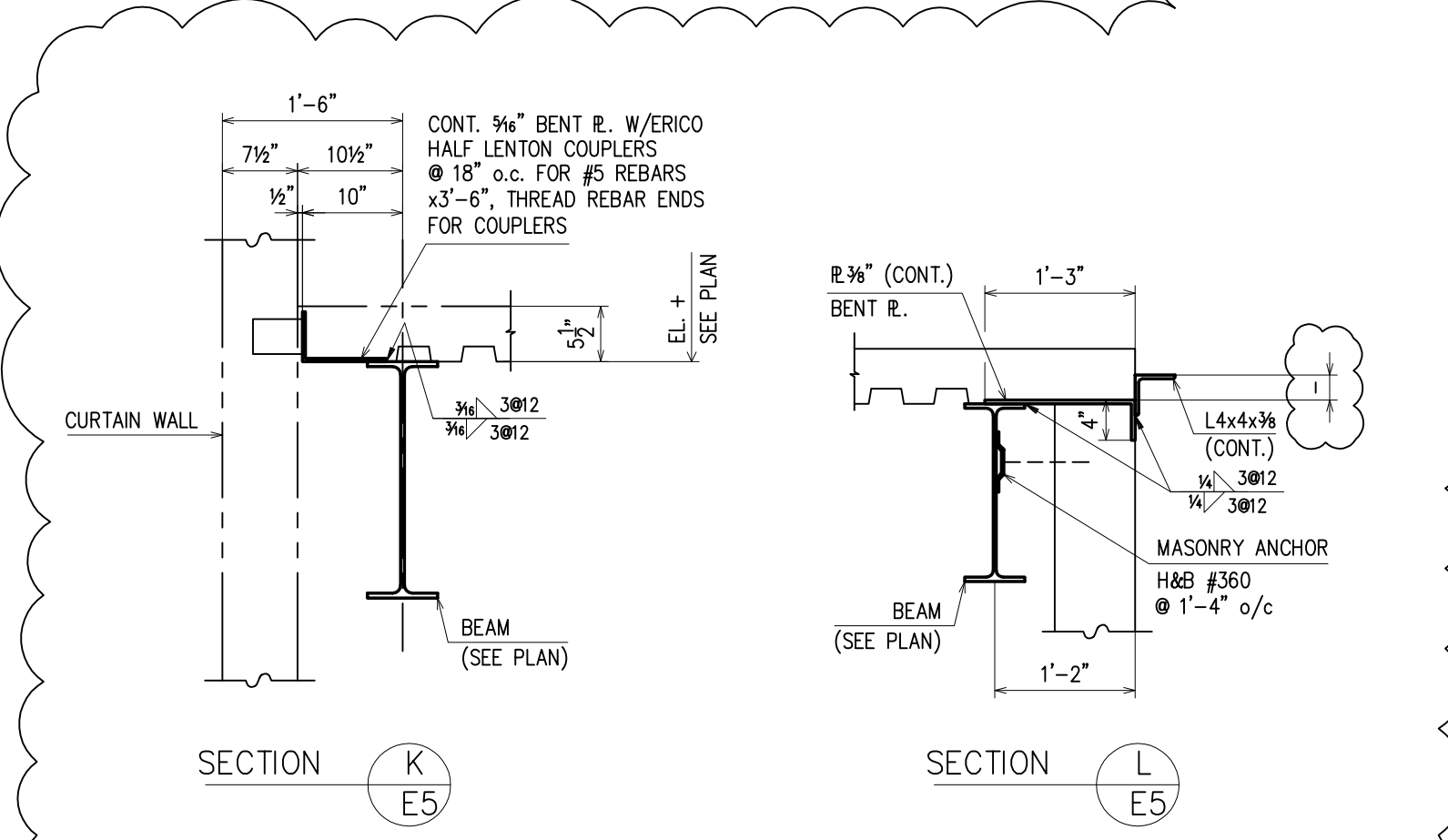
APPROVAL/REVIEW AUTHORITY: PLEASE REVIEW THIS DRAWING CAREFULLY. IT REPRESENTS OUR INTERPRETATION OF THE INTENT OF THE CONTRACT DOCUMENTS. HOWEVER, THE STEEL FABRICATOR AND THE STRUCTURAL STEEL ERECTOR ASSUME NO RESPONSIBILITY FOR THE ACCURACY OF THE INFORMATION SHOWN ON THIS DRAWING. THIS IS THE RESPONSIBILITY OF THE OWNER.
 IT WILL BE ASSUMED THAT ALL INFORMATION FROM HEREIN HAS THE APPROVAL OF THE APPROVAL AUTHORITY UNLESS NOTED TO THE CONTRARY BY THIS DRAWING WHEN IT IS RETURNED FOR APPROVAL.
 SUBSEQUENT CHANGES TO INFORMATION SHOWN IN THESE DRAWINGS AFTER THEIR SUBMISSION WILL BE CONSIDERED AS CONTRACT CHANGES.
 ISSUED BY THE NATIONAL INSTITUTE OF STEEL BUILDING 1971.

PAINT	ONE SHOP COAT U/NOTED	4/28	PER APPROVAL	
MATERIAL	A36 U/NOTED	4/20	ADD MARKINGS	
HOLES	1 1/2" U/NOTED	3/27	PER ENG.	
ELECTRODES	E70XX	3/1	PER CHECK	3/24 FOR FIELD USE
TOTAL WEIGHT	NO/DATE	NO/DATE	NO/DATE	DESCRIPTION
DIAG. REF #				REVISIONS

DRAWINGS PREPARED BY:		WEIR WELDING CO. INC.	
DIVISION FIVE DETAILING INC.		1770 GALLAGHER DR.	
Vineland, New Jersey 08360	DRAFTER Yuh	COURT HOUSE SQUARE	CONTRACT NO S-609
Phone: (856) 794-9474	DATE 1/31/01	CHECKED GS	DWG NO
Fax: (856) 696-2027	DATE 3/1/01	SOMERVILLE BOROUGH, NEW JERSEY	E3



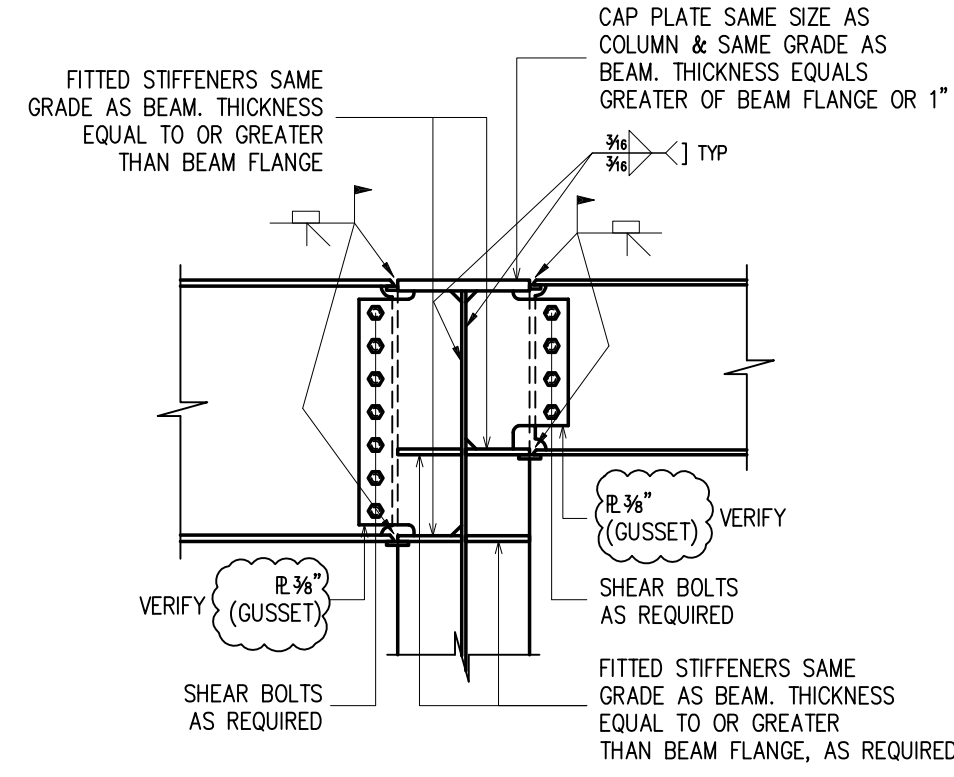
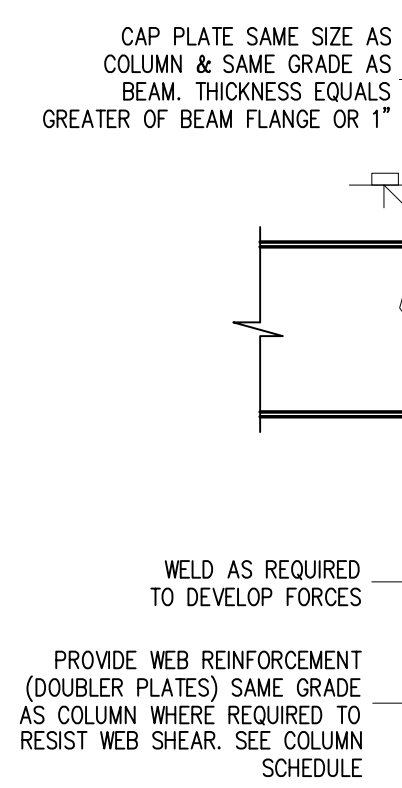
TYPICAL MASONRY ANCHORING SYSTEM DETAILS
GRIPSTAY CHANNELS AND ANCHOR TO BE AS MANUFACTURED BY HOHMANN & BARNARD, INC. OR EQUAL.



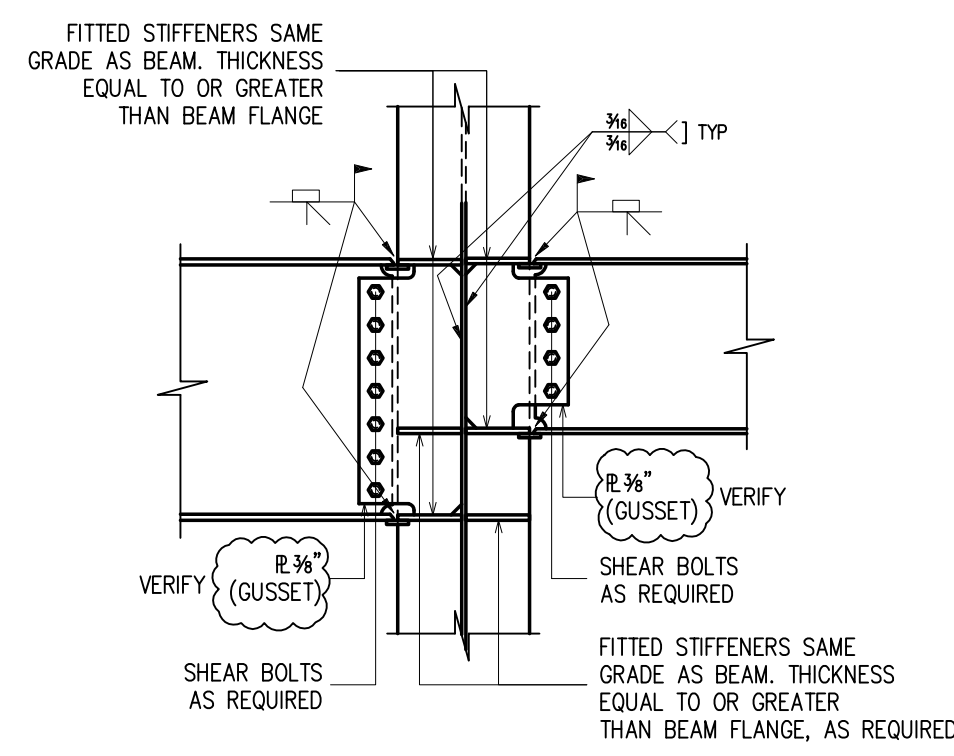
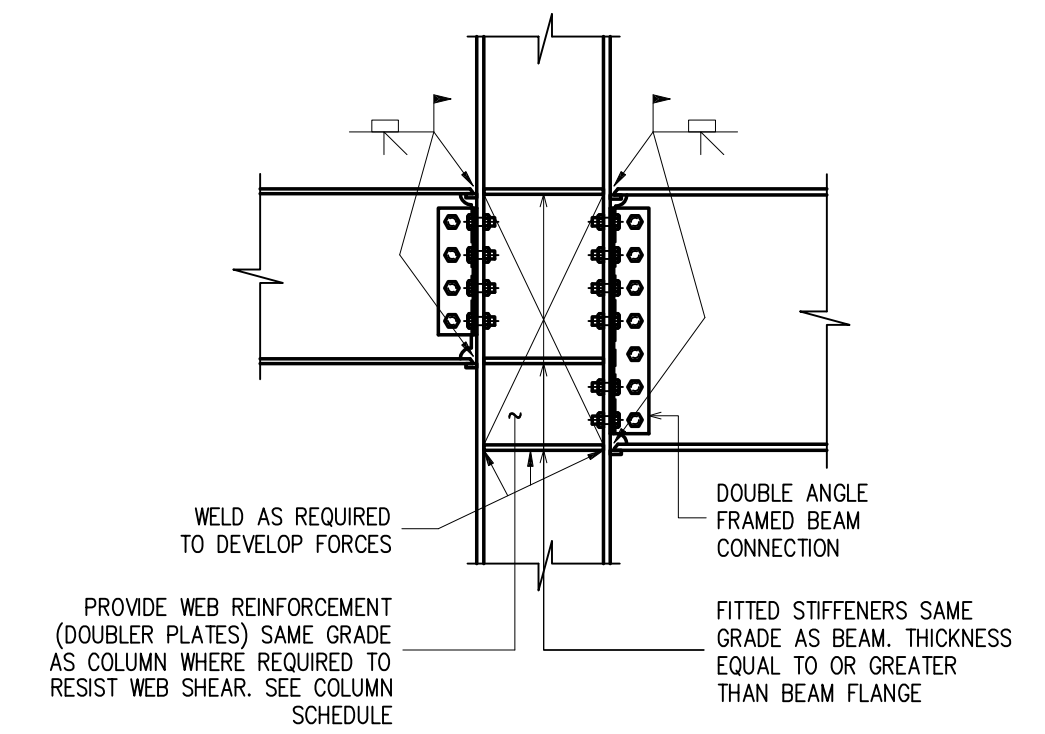
APPROVAL/REVIEW AUTHORITY: PLEASE REVIEW THIS DRAWING CAREFULLY. IT REPRESENTS OUR INTERPRETATION OF THE INTENT OF THE CONTRACT DOCUMENTS. HOWEVER, THE STEEL FABRICATOR AND THE STRUCTURAL STEEL ERECTOR ASSUME NO RESPONSIBILITY FOR THE ACCURACY OF THE INFORMATION ON THIS DRAWING. THIS IS THE RESPONSIBILITY OF THE BUYER.
IF WE ARE ASSUMED THAT ALL INFORMATION DRAWN HEREIN HAS THE APPROVATION OF THE APPROVAL AUTHORITY, PLEASE NOTE TO THE CONTRARY ON THIS DRAWING WHEN IT IS RETURNED FROM APPROVAL.
SUBJECT TO CHANGE: TO INFORMATION DRAWING ON THESE DRAWINGS AFTER FIRST SUBMISSION WILL BE CONSIDERED AS CONTRACT CHANGES.
ADOPTED BY THE NATIONAL INSTITUTE OF STEEL BUILDING 1971.

PAINT	ONE SHOP COAT U/NOTED			
MATERIAL	A36 U/NOTED	7/8"	FOR FIELD USE	
HOLES	13/16" U/NOTED	3/4"	PER ENG.	
ELECTRODES	E70XX	3/4"	PER CHECK	
TOTAL WEIGHT	NO DATE	DESCRIPTION	NO DATE	DESCRIPTION
DIAG. REF #				REVISIONS

DRAWINGS PREPARED BY:		WEIR WELDING CO. INC.	
DIVISION FIVE DETAILING INC.		1857 W. Landis Ave. Suite D	
Vineland, New Jersey 08360		COURT HOUSE SQUARE	
Phone: (856) 794-9474	DATE 1/19/20	CONTRACT NO.	
Fax: (856) 696-2027	CHECKED	SOMMERVILLE BOROUGH, NEW JERSEY	
	DATE	DWG NO. E5	



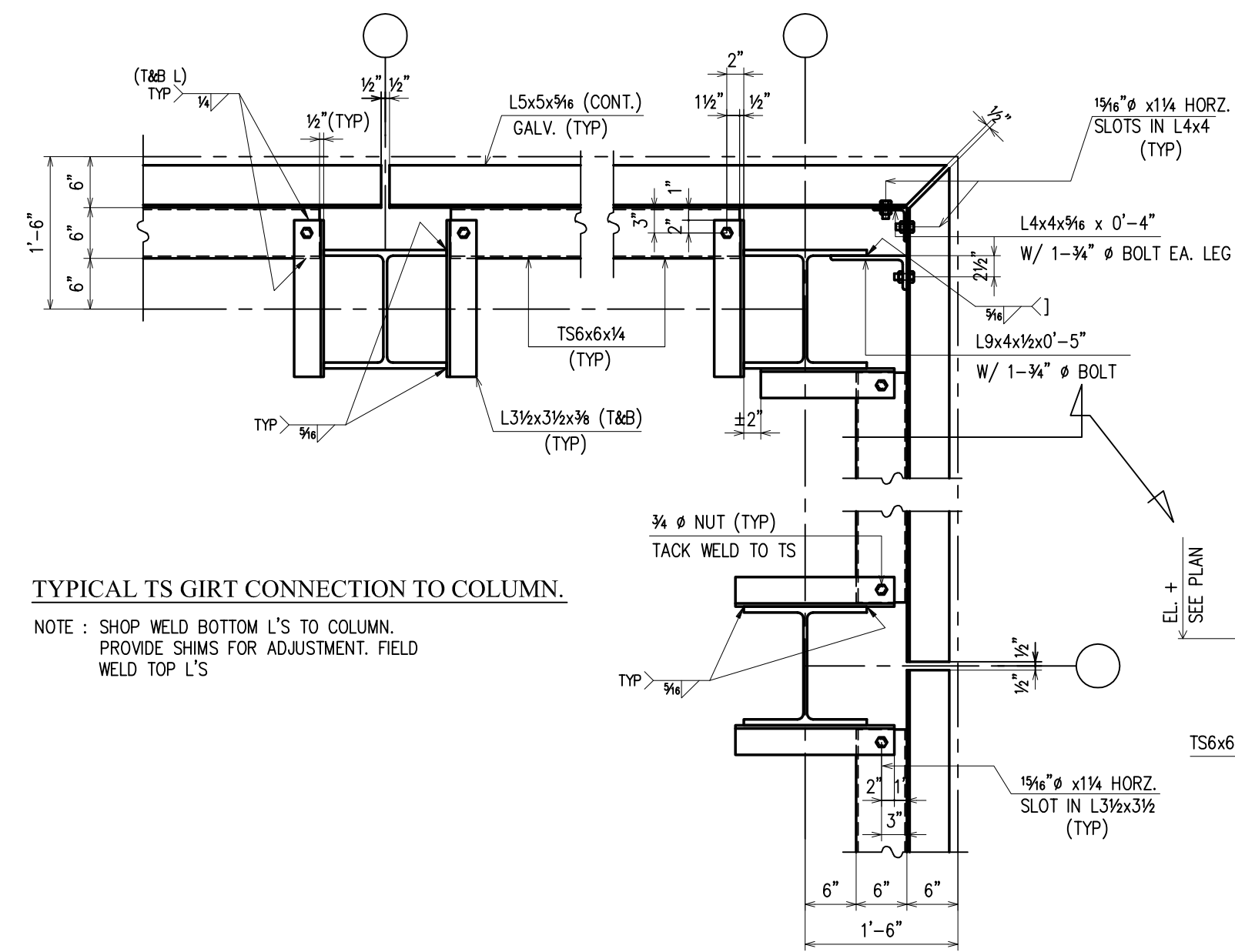
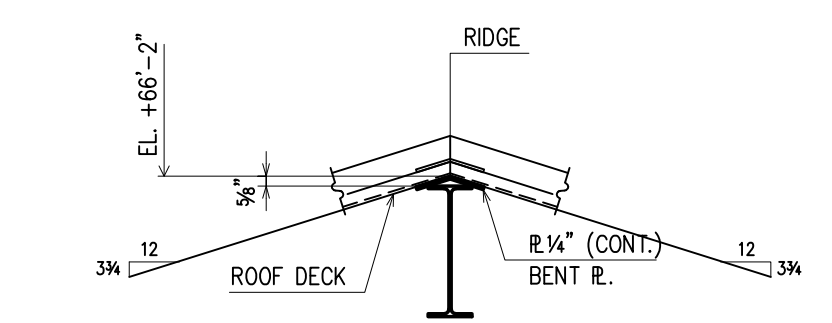
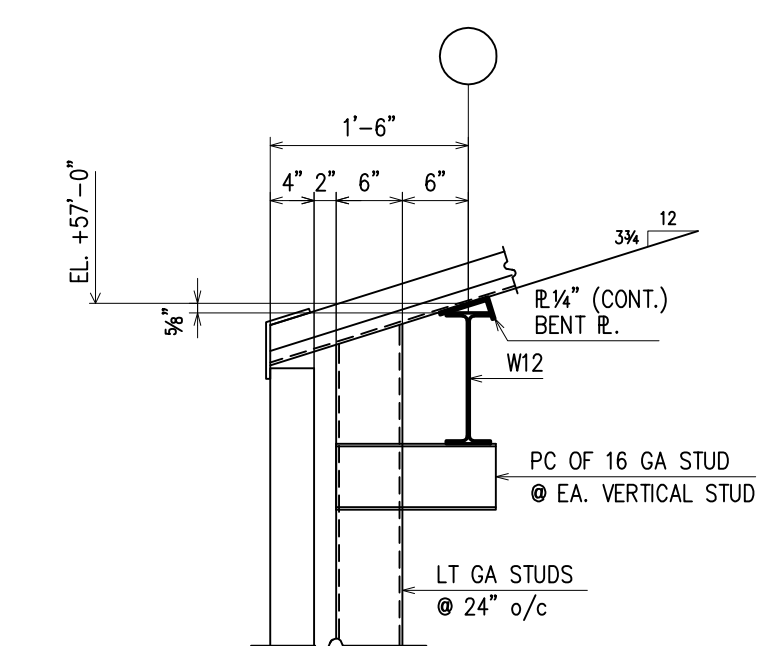
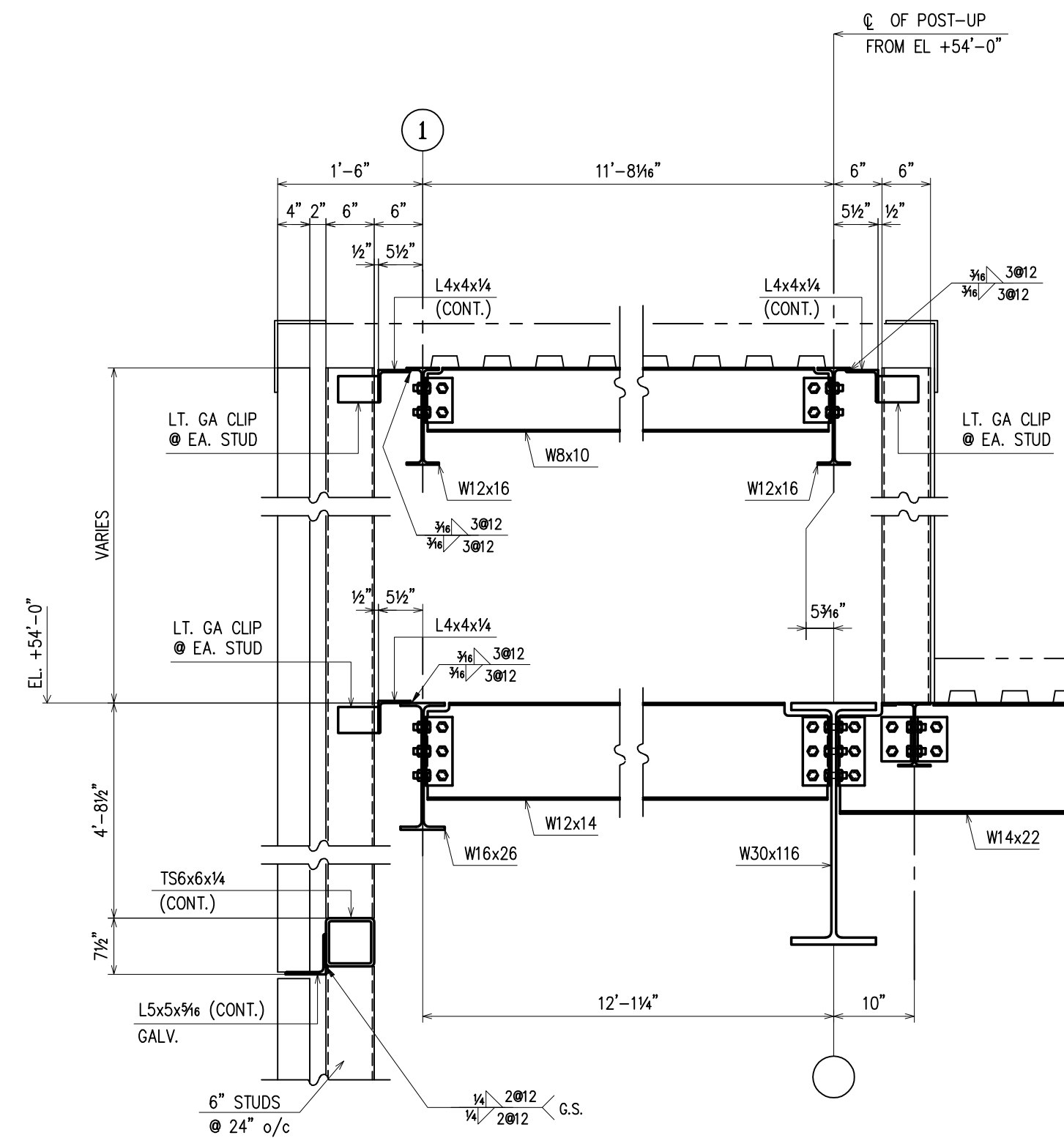
DISCONTINUOUS COLUMNS



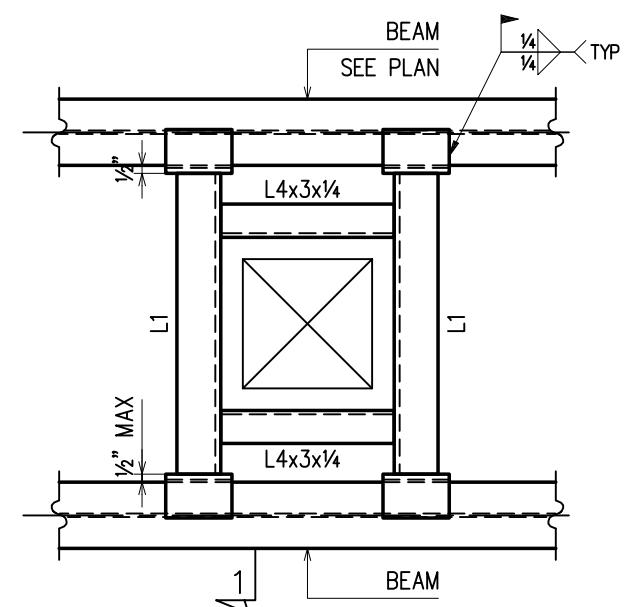
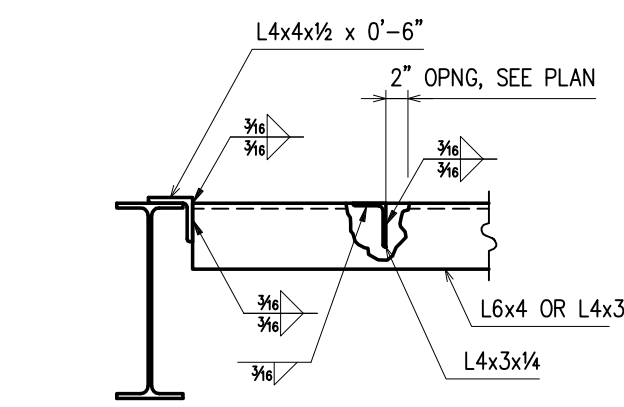
CONTINUOUS COLUMNS

TYPICAL BEAM TO COLUMN MOMENT CONNECTION DETAILS

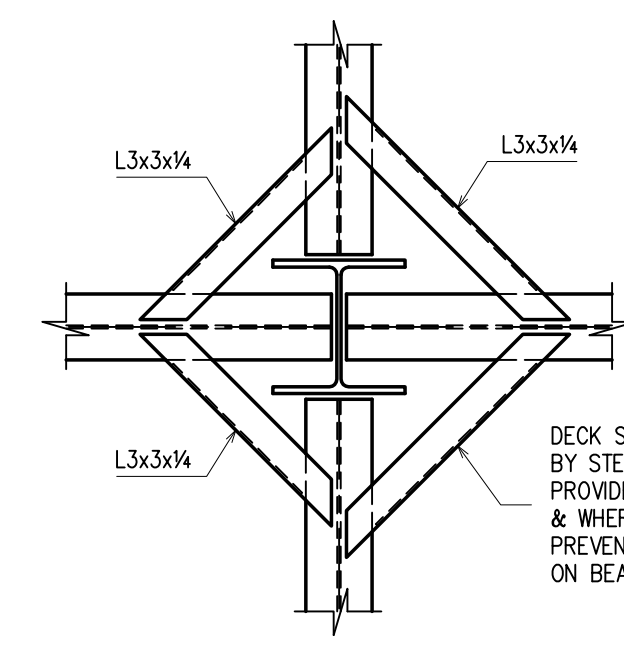
1. PROVIDE THIS DETAIL WHERE NOTED THUS, ON PLAN.
2. MOMENT CONNECTION TO DEVELOP FULL BEAM CAPACITY UNLESS OTHERWISE NOTED.
3. ECCENTRICITY OF BEAM SHEAR CONNECTION MUST BE FULLY DEVELOPED TO WEB OF COLUMN WHERE BEAM FRAMES TO ONE SIDE ONLY.
4. PROVIDE COLUMN WEB STIFFENERS WHERE REQUIRED BY AISC SPECIFICATIONS, LATES EDITION.
5. WHEN BEAM FRAMES INTO COLUMN WEB FROM ONE SIDE ONLY, STIFFENERS ARE REQUIRED ON BOTH SIDES OF COLUMN WEB.



TYPICAL TS GIRTS CONNECTION TO COLUMN.
NOTE: SHOP WELD BOTTOM L'S TO COLUMN. PROVIDE SHIMS FOR ADJUSTMENT. FIELD WELD TOP L'S



FOR OPENINGS LARGER THAN 8"x8" OR 8"
OPENING DETAILS IN STEEL DECK
NOTE: L1 DENOTES L6x4x1/4 AT FLOORS & AT ROOF BEAM OR JOIST SPACING GREATER THAN 7'-0" & L4x3x1/4 AT ROOF BEAM OR JOIST SPACING EQUAL TO OR LESS THAN 7'-0".



STEEL DECK FRAMING AT COLUMN

APPROVAL/REVIEW AUTHORITY: PLEASE REVIEW THIS DRAWING CAREFULLY. IT REPRESENTS OUR INTERPRETATION OF THE INTENT OF THE CONTRACT DOCUMENTS. HOWEVER, THE STEEL FABRICATOR AND THE STRUCTURAL STEEL DESIGNER ASSUME NO RESPONSIBILITY FOR THE ACCURACY OF THE INFORMATION SHOWN ON THIS DRAWING. THIS IS THE RESPONSIBILITY OF THE BUYER.
IT WILL BE ASSUMED THAT ALL INFORMATION SHOWN HEREIN HAS THE AFFIRMATION OF THE APPROVAL AUTHORITY UNLESS NOTED TO THE CONTRARY ON THIS DRAWING WHEN IT IS RETURNED FROM APPROVAL.
SUBSEQUENT CHANGES TO INFORMATION SHOWN ON THESE DRAWINGS AFTER FIRST SUBMISSION WILL BE CONSIDERED AS CONTRACT CHANGES.
ADOPTED BY THE NATIONAL INSTITUTE OF STEEL, RETAINED 1971.

PAINT	ONE SHOP COAT U/NOTED	7/2H	FOR FIELD USE		
MATERIAL	A36 U/NOTED	4/2H	PER APPROVAL		
HOLES	13/16" U/NOTED	3/2H	PER ENG.		
ELECTRODES	E70XX	3/1	PER CHECK		
TOTAL WEIGHT		NO DATE	NO DATE	DESCRIPTION	
DIAG. REF #				REVISIONS	

DRAWINGS PREPARED BY:		WEIR WELDING CO. INC.	
DIVISION FIVE DETAILING INC.		1857 W. Landis Ave. Suite D	
Vineland, New Jersey 08360		COURT HOUSE SQUARE	
Phone: (856) 794-9474	DATE 1/9/01	CONTRACT NO.	
Fax: (856) 696-2027	CHECKED JBI	SOMMERVILLE BOROUGH, NEW JERSEY	
	DATE 3/1/01	DWG NO. E6	